



Cat. No.	Description	Color	Case Qty.	Weight (lbs)	3M
EZD22	Series 22 EZ-Path® Fire Rated Pathway Kit	Orange	6	2.00	—
EZDP133CWK	Series 33 EZ-Path® Fire Rated Pathway Circular Kit	Orange	1	3.50	—
EZDP44S2	Series 44 EZ-Path® Fire Rated Pathway Kit	Orange	1	9.60	—
RFG1	Two-piece split cable grommet for a single cables or multiple smaller cables up to 0.27 in. (7mm) O.D. 10 grommets per package, 10 packages per case	Red	10 pkgs	0.17	—
RFG2	Two-piece split cable grommet for a single cables or multiple smaller cables up to 0.53 in. (14mm) O.D. 10 grommets per package, 10 packages per case	Red	10 pkgs	0.40	—
NEZ33	EZ-Path® Smoke & Acoustical Pathway	Blue	4	1.2	—

*Other product options are available based on the application type. Visit www.stifirestop.com for product accessories and complete ordering information +Indicates both catalog numbers must be ordered to equal STI equivalent.



Cat. No.	Description	Color	Case Qty.	Weight (lbs)	3M
FS100	1" Ready® Sleeve Kit	Silver	6	1.00	98-0400-5513-3 and 98-0400-5516-6 +
FS200	2" Ready® Sleeve Kit	Silver	6	2.00	98-0400-5514-1 and 98-0400-5518-2 +
FS201	2" Ready® Sleeve Kit with larger plates	Silver	1	2.90	98-0400-5514-1 and 98-0400-5518-2 +
FS400	4" Ready® Sleeve Kit	Silver	6	4.00	—
FS401	4" Ready® Sleeve Kit with larger plates	Silver	1	4.80	—
FSR100	1" Ready® Split Sleeve Kit	Silver	4	1.25	98-0400-5513-3 and 98-0400-5516-6 +
FSR200	2" Ready® Split Sleeve Kit	Silver	4	2.70	98-0400-5514-1 and 98-0400-5518-2 +
FSR400	4" Ready® Split Sleeve Kit	Silver	4	7.20	—



Cat. No.	Description	Color	Case Qty.	Weight (lbs)	3M
LCI300	10.1 oz. caulk tube (300 ml) 18.2 cu. in	Pale Red	12	0.94	CP25WB+ or IC15WB
LCI320	20 oz. sausage (592 ml) 36 cu. in	Pale Red	12	1.59	CP25WB+ or IC15WB
LCI329	29 oz. caulk tube (858 ml) 52 cu. in	Pale Red	10	2.27	CP25WB+ or IC15WB
LCI305	5 gallon pail (19 L) 1155 cu. in	Pale Red	1	50.00	CP25WB+ or IC15WB



Cat. No.	Description	Color	Case Qty.	Weight (lbs)	3M
SSP28	24 cu. in putty stick	Red	1	1.85	MP Stix (21 cu. in)
SSP100	36 cu. in putty tube	Red	6	2.30	—
SSP4S	7-1/4" x 7-1/4" putty pad	Red	20	0.59	MP Pad (7" x 7")
SSP9S	9" x 9" putty pad	Red	20	0.99	MP Pad (9.5" x 9.5")



Cat. No.	Description	Color	Case Qty.	Weight (lbs)	3M
SSB14	1" x 4" x 9" firestop pillow	Red	20	0.18	—
SSB24	2" x 4" x 9" firestop pillow	Red	10	0.27	FB Pillow
SSB26	2" x 6" x 9" firestop pillow	Red	22	0.35	FB Pillow
SSB36	3" x 6" x 9" firestop pillow	Red	16	0.48	FB Pillow



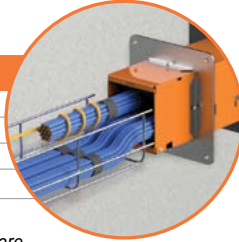
Cat. No.	Description	Color	Case Qty.	Weight (lbs)	3M
FP200	2" Firestop Plug	Red	10	0.24	—
FP400	4" Firestop Plug	Red	10	0.49	—

EZ-PATH® Fire Rated Cable Pathway *Easy Installation and Cable Changes without Firestopping*

- No firestopping required!
- Quick and easy cable changes
- All in one design installs in minutes.
- Available in kits for convenient ordering, or individual part numbers per application

Catalog Number	Size	Units/Carton
EZD22	EZ-PATH Series 22 kit - device with plates	6
EZDP133CWK	EZ-PATH Series 33 kit - device with circular plates	1
EZDP44S2	EZ-PATH Series 44 kit - device with plates	1

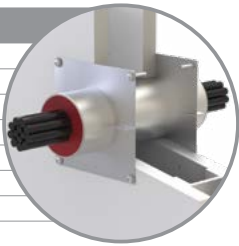
Devices and plates are sold individually as well as kits. Visit www.stifirestop.com for detailed ordering information.



SpecSeal® Ready® Sleeve Firestop Sleeve *Ready® Sleeve firestop sleeves are ready-to-install out of box*

- Kit includes sleeve, mounting plates, firestop gaskets, and putty – no additional products required!
- Economical and fast to install pathways in non-rated and rated walls
- Solid and split design
- Allows for conveyance of power, data, telecom, and control cables
- Meets code requirements for rigid support of sleeves/pathways
- Kit as sold provides a 2 hr. rating
- Ratings up to 4 hours when mineral wool is use

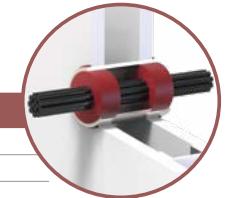
Catalog Number	Size	Units/Carton
FS100	1" trade size kit (25 mm)	6
FS200	2" trade size kit (51 mm)	6
FS201	2" trade size kit (51 mm) with larger plates	1
FS400	4" trade size kit (102 mm)	6
FS401	4" trade size kit (102 mm) with larger plates	1
FSR100	1" split sleeve kit (25 mm)	4
FSR200	2" split sleeve kit (51 mm)	4
FSR400	4" split sleeve kit (102 mm)	4



SpecSeal® Firestop Plugs *Ready-To-Use Intumescent Flexible Plug For Conduit Sleeves*

- Fast and easy installation - no special tools required
- Intumescent - expands in all directions for a tough, tight seal
- Smoke resistant - superior air leakage ratings
- Soft and resilient foam - conforms to cable surface

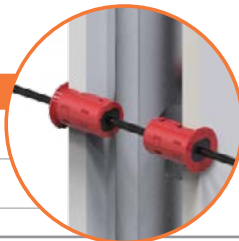
Catalog Number	Size	Units/Carton
FP200	2" Firestop Plug	10
FP400	4" Firestop Plug	10



EZ-Firestop® Grommet *Eliminate Sleeves, Sealant, And Putty With The EZ-Firestop® Grommet*

- Quick to install - 2 piece grommet snaps together for an easy installation
- Economical - eliminates Sleeves and the need for putty or sealant
- Split design - can be used with previously installed cables
- Made with premium, plenum-grade material - exceptional flame & heat resistance

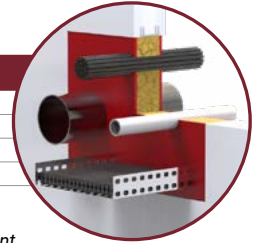
Catalog Number	Size	Units/Carton
RFG1	Two-piece split cable grommet for a single cables or multiple smaller cables. Contains 10 grommets per pkg.	10 pkgs.
RFG2	Two-piece split cable grommet for a single cables or multiple smaller cables. Contains 10 grommets per pkg.	10 pkgs.



SpecSeal® LCI Sealant *SpecSeal® LCI Sealant is a commercial grade intumescent latex based sealant*

- Water-based - Easy clean up, no special handling, routine disposal
- Intumescent – expands up to 10x to squeeze and seal around penetrants
- Water Resistant – Won't re emulsify when dry
- Acoustically tested to reduce sound transmission

Catalog Number	Package	Volume	Units/Carton
LCI300	10.1 oz. (300 ml)	18.2 cu. in	12
LCI320	20 oz. (592 ml)	36 cu. in	12
LCI329	29 oz. (858 ml)	52 cu. in	10
LCI305	5 gallon (19 L)	1155 cu. in	1



SpecSeal® Putty & Putty Pads *SpecSeal® Putty is a non-hardening, intumescent compound available in sticks or pads*

- Easy retrofit - Can be removed and replaced to allow for cable moves, add-ons, and changes
- Red color for easy identification
- Intumescent – expands up to 8x to squeeze and seal around penetrants
- Pads can be used on electrical switch and receptacle boxes to reduce horizontal separation
- Pads also deaden sound on switch and receptacle boxes

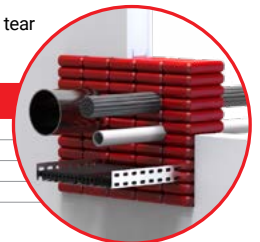
Catalog Number	Size	Volume	Units/Carton
SSP28	2" rd. x 8"	24 cu. in	1
SSP100	2" rd. x 12"	36 cu. in	6
SSP4S	7.25" x 7.25" pad	52 cu. in	20
SSP9S	9" x 9" pad	462 cu. in	20



SpecSeal® Firestop Pillows *SpecSeal® Firestop Pillows are intumescent, resilient cushions or soft bricks*

- Intumescent – expand with heat to squeeze and seal voids
- Excellent smoke seal – reduce air and smoke leakage through openings
- Heat Sealed Poly Bag – Provides a slip finish for easy installation and won't unravel or tear
- Intumescent coating on all six sides – Less firestop putty required compared to competing brands

Catalog Number	Size	Units/Carton
SSB14	1" x 4" x 9" pillow (25 x 102 x 229 mm)	20
SSB24	2" x 4" x 9" pillow (51 x 102 x 229 mm)	10
SSB26	2" x 6" x 9" pillow (51 x 152 x 229 mm)	22
SSB36	3" x 6" x 9" pillow (76 x 152 x 229 mm)	16



SpecSeal® Composite Sheet *SpecSeal® Composite Sheet is a lightweight, easily fabricated panel that surface mounts to walls and floors*

- Lighter and thinner - approximately half the weight and thickness of traditional composite sheet
- Easier to fabricate - engineered with the installer in mind
- Intumescent - expands up to 15X when exposed to temperatures in excess of 350°F compared to 8-10X for competing brands
- Acoustically tested - reduces sound transmission
- Hole reduction - reduces large openings when used in conjunction with other SpecSeal® or EZ-Path® Firestop products

Catalog Number	Size	Units/Carton
CS1628	16" x 28" (41 x 71 cm)	1
CS2436	24" x 36" (61 x 92 cm)	1
CS3636	36" x 36" (92 x 92 cm)	1
CS3641	36" x 41" (92 x 104 cm)	1
CS2852	28" x 52" (72 x 132 cm)	1

